

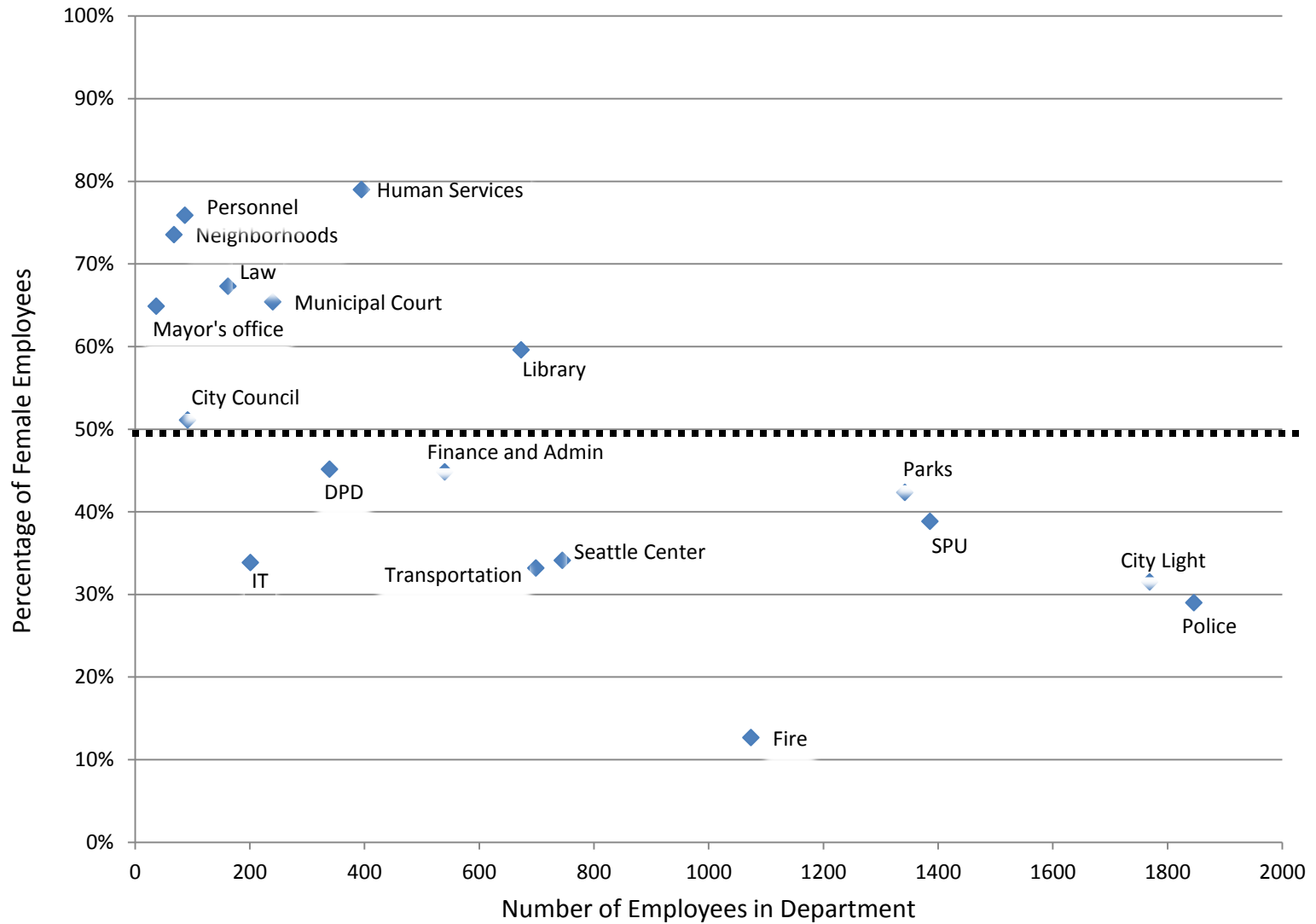


*Tim Burgess*  
Seattle City Councilmember

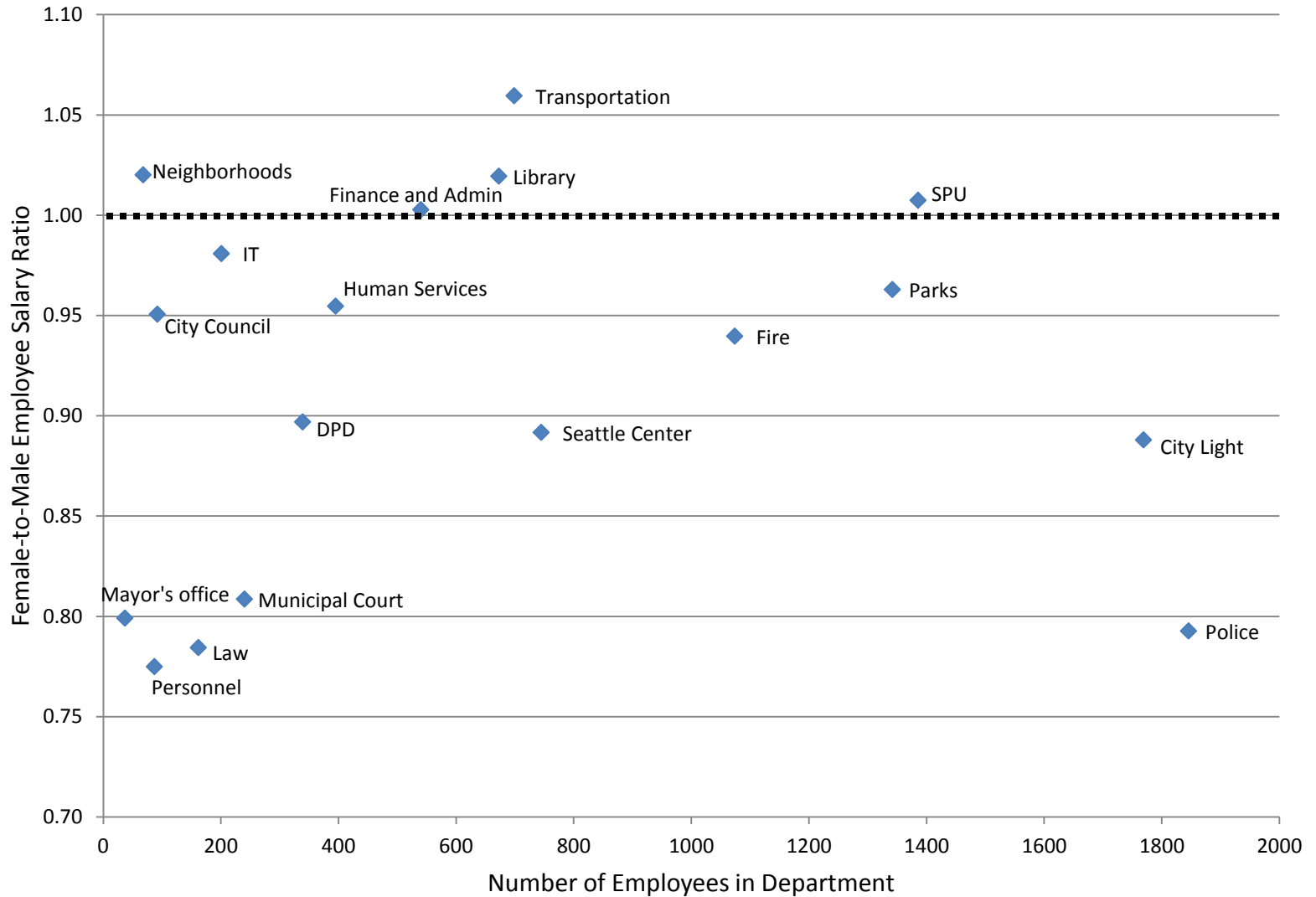
# Gender Pay Equity: A Closer Look at City of Seattle Employment Data

Prepared September 2013

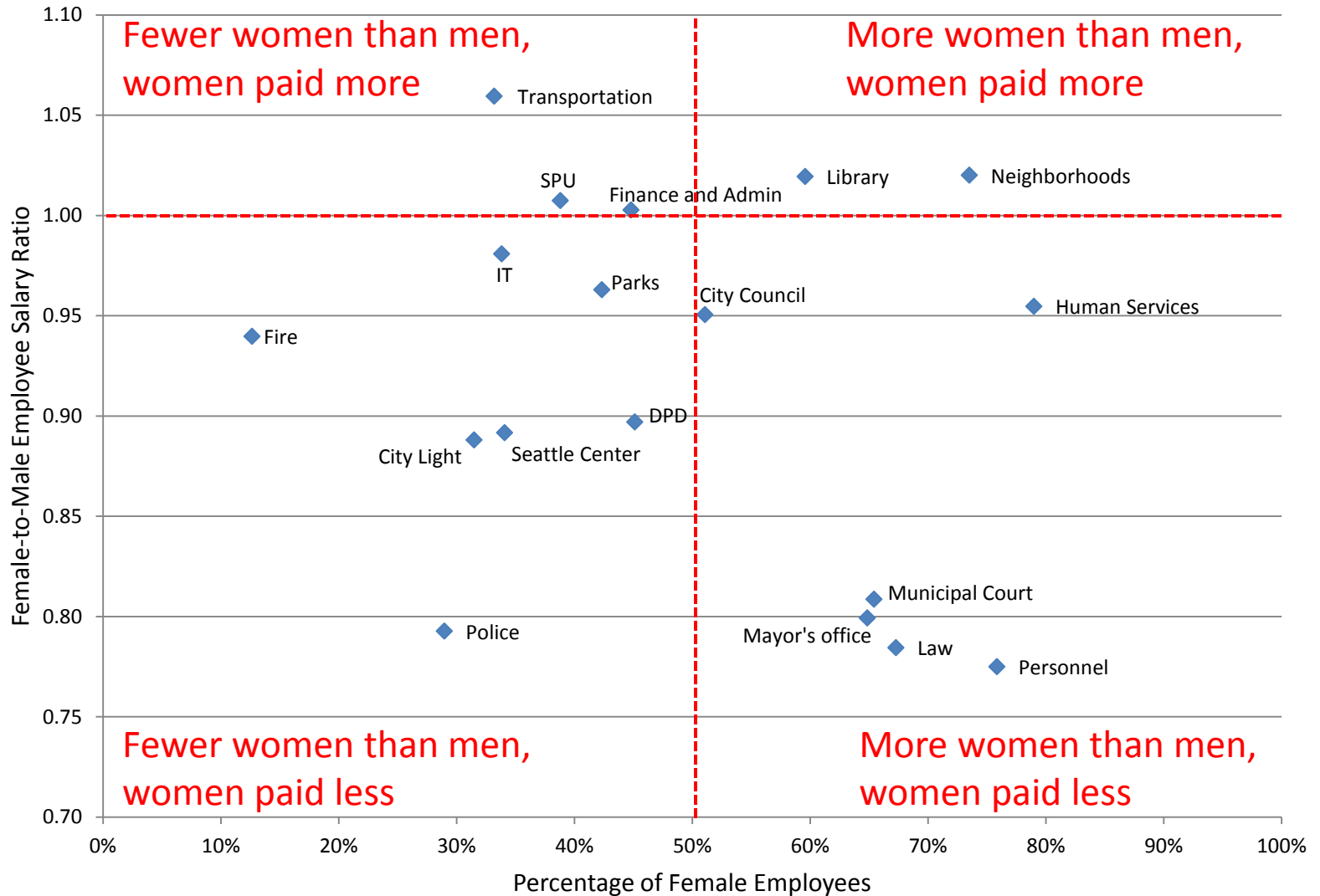
# Percentage of Female Employees, by Size of Department



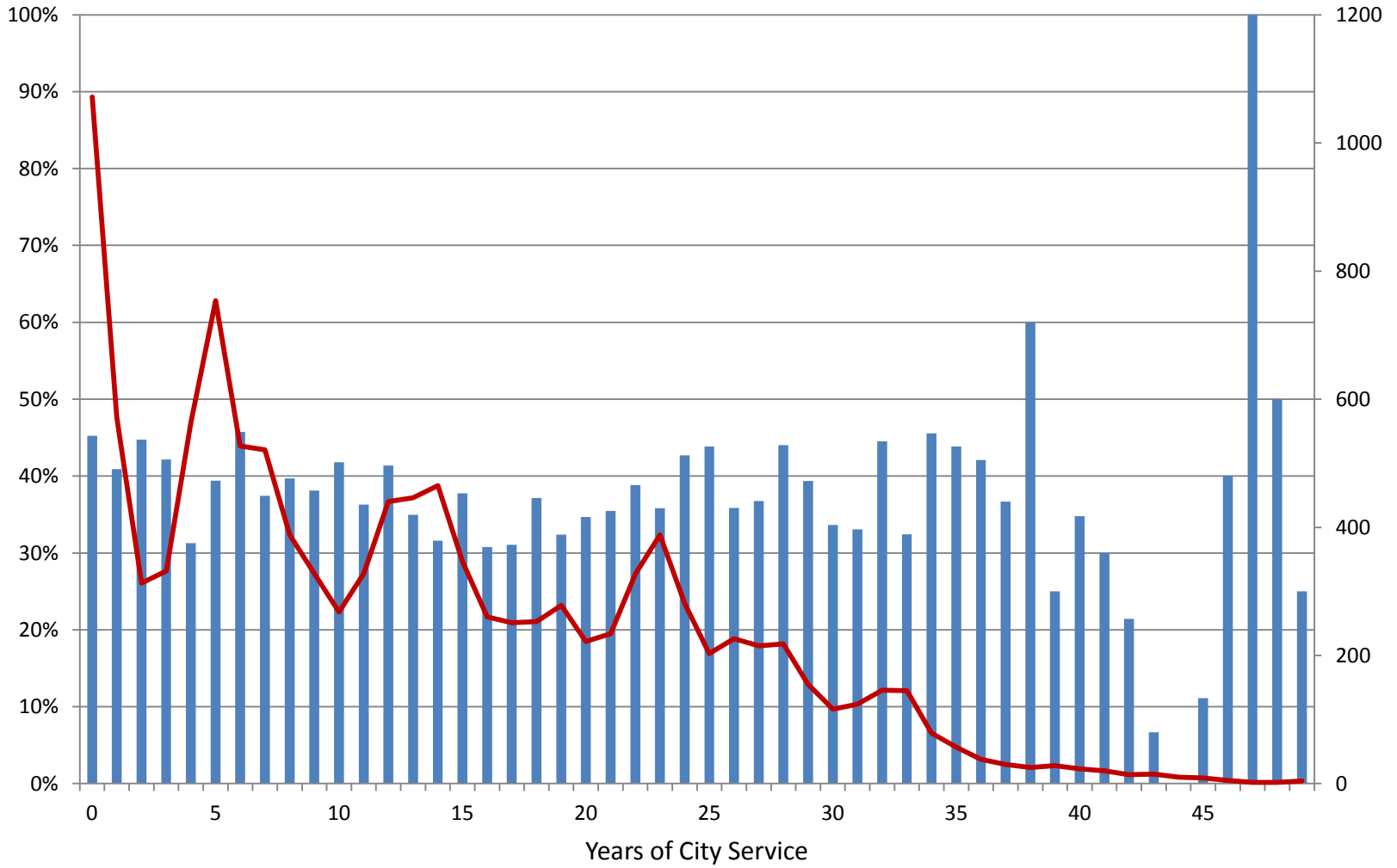
# Female-to-Male Employee Salary Ratio, by Size of Department



## Female-to-Male Employee Salary Ratio (Large Departments)

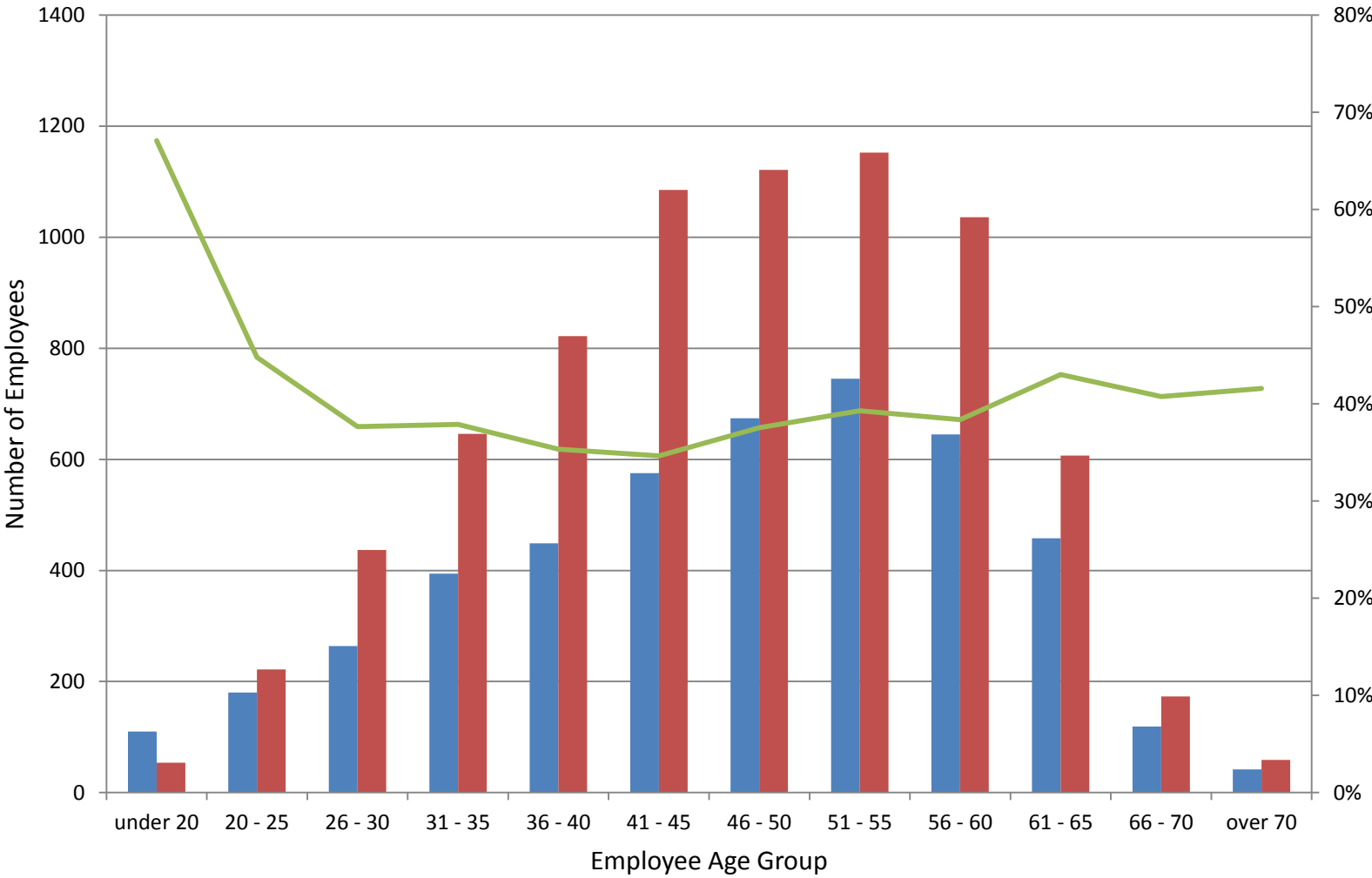


# Percentage of Female Employees By Years of City Service



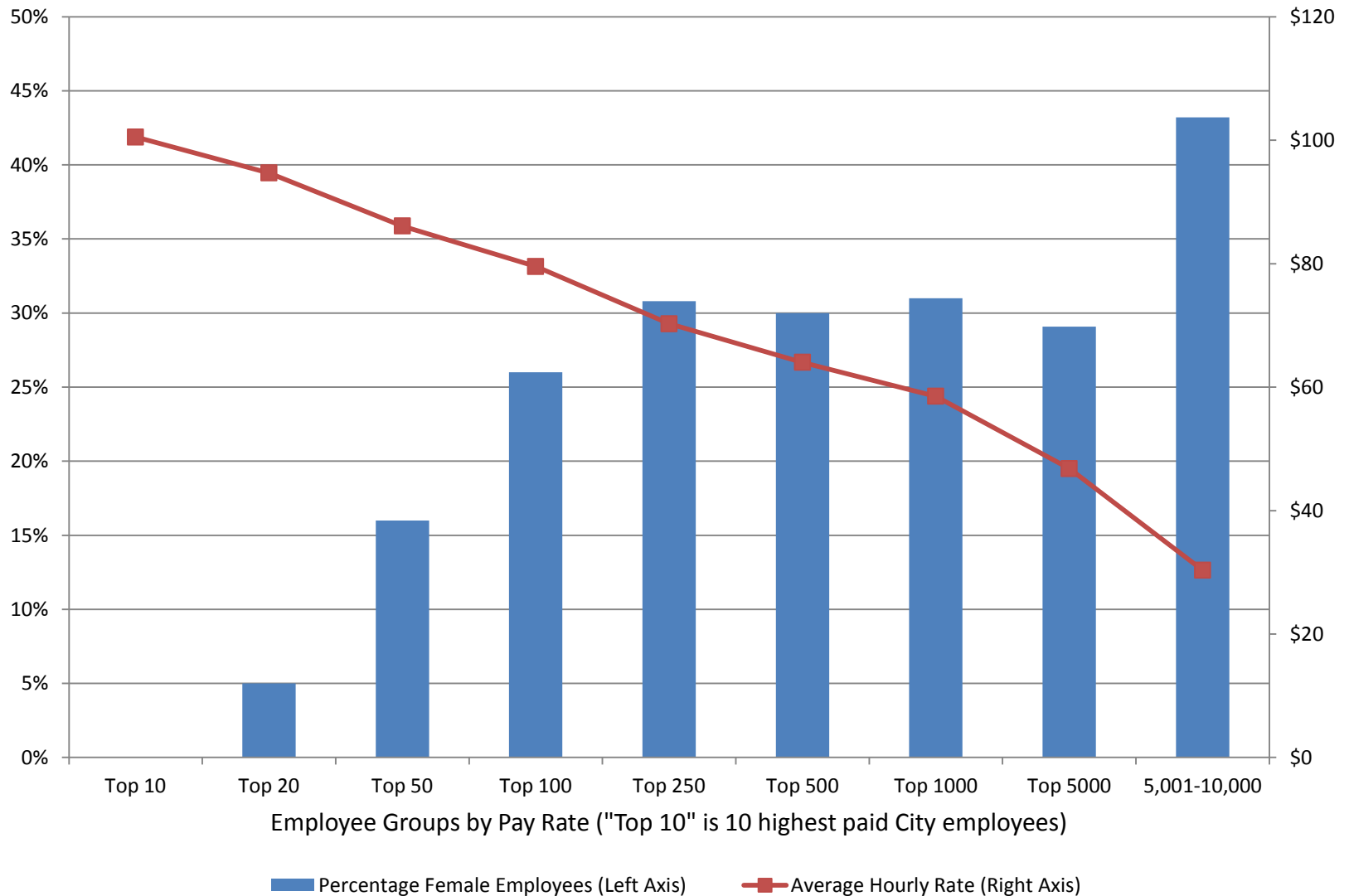
■ Percentage of Female Employees - Left Axis
 — Total Number of Employees - Right Axis

# City Employees By Age

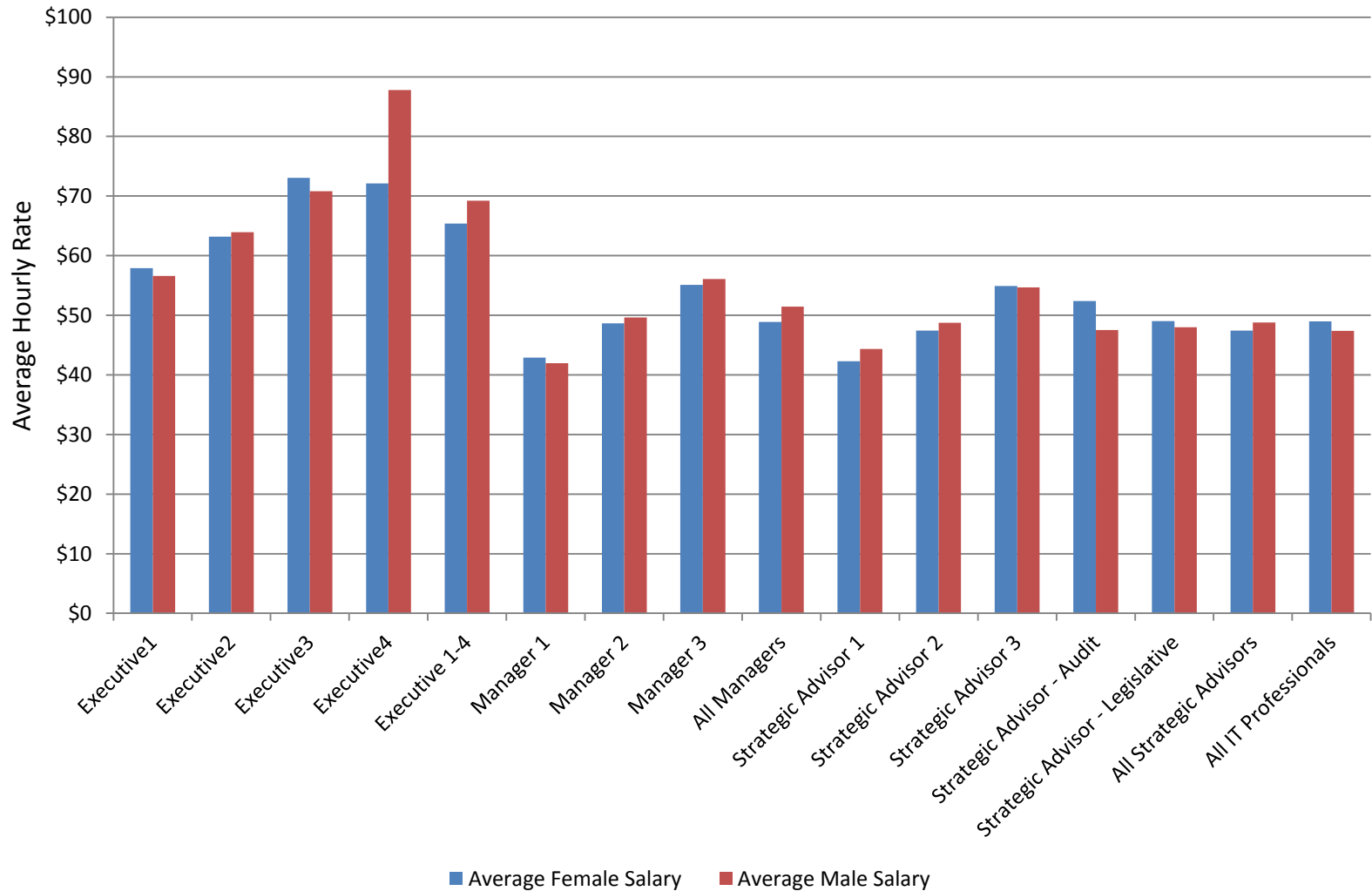


■ Female    
 ■ Male    
 — Percentage of Employees that are Female (Right Axis)

## Percentage of Female Employees Among Higher Paid Positions

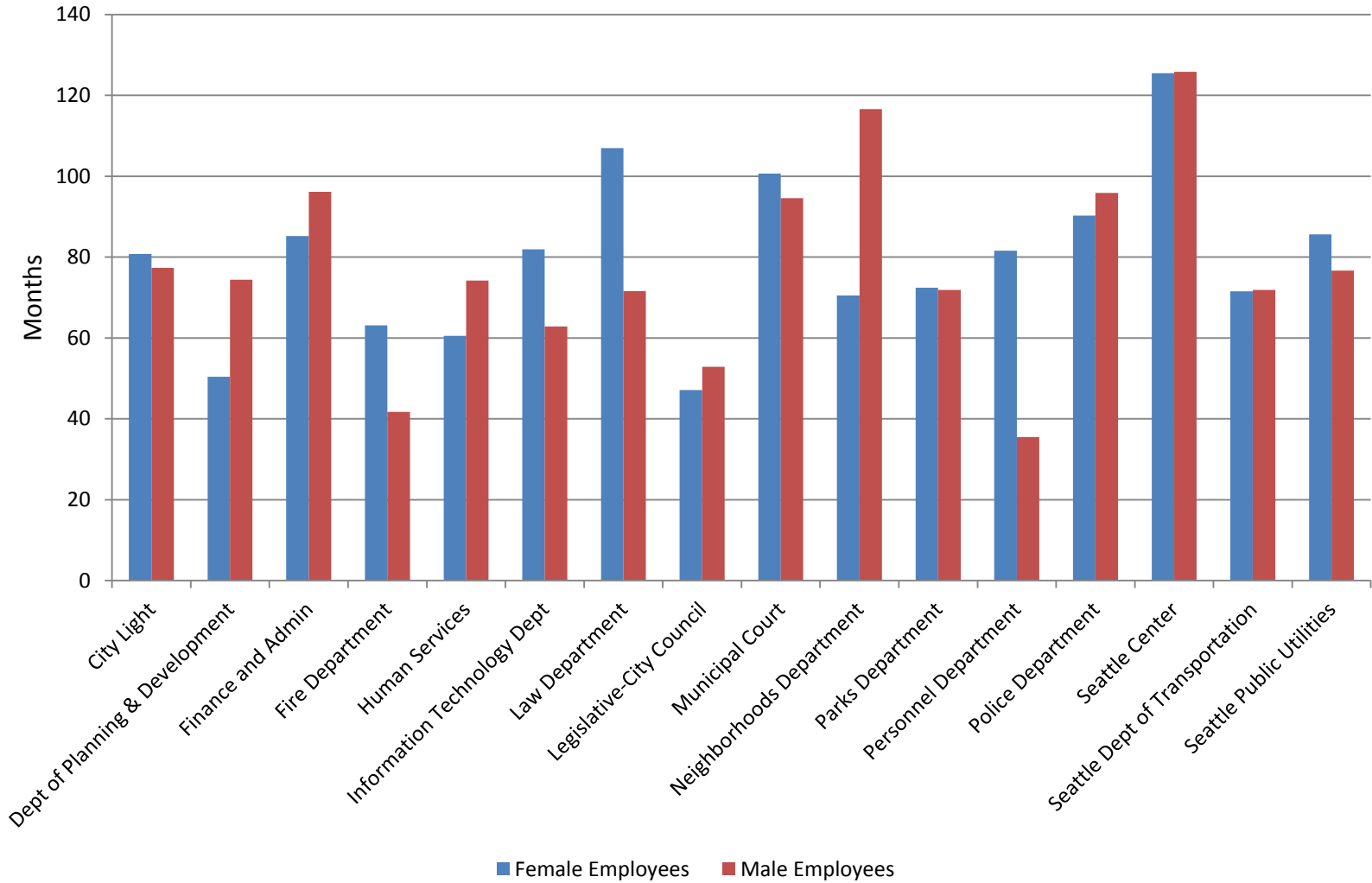


## Comparing Male and Female Employee Salaries in Job Titles with a Discretionary Pay Range





## Average Longevity in Current Classification for Positions in the Step Progression Program





*Tim Burgess*  
Seattle City Councilmember

Questions or comments about the data? Please contact:

Councilmember Tim Burgess

[tim.burgess@seattle.gov](mailto:tim.burgess@seattle.gov)

206-684-8806

Nate Van Duzer, Legislative Aide

[nate.vanduzer@seattle.gov](mailto:nate.vanduzer@seattle.gov)

206-684-8806